



**CRAFT ~ naturally textured embroideries, jacquards, weaves & sheers**

Evoking a calming home environment, the Craft Collection takes inspiration from natural textures through embroideries, weaves, jacquards, and sheers, incorporating warm-toned fabrics for a cohesive feel. Tactile three-dimensional elements are created with crewel work embroidery and a tufted polka dot, with semi-plain textures making for ideal layering within the home. Craft embraces softer hues of warm neutrals, fresh greens, and cool silvers, enhancing balanced interiors.



**Willow Almond**



**Sampling Bark**



**Waffle Bark**



**Ivy Bark**



**Wilder Bark**



**Rattan Bark**



**Marble Almond**



**Clove Bark**



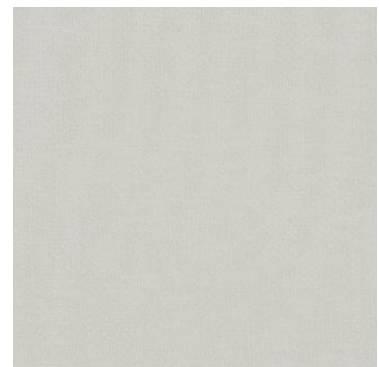
**Fay Bark**



**Pom Pom Bark**

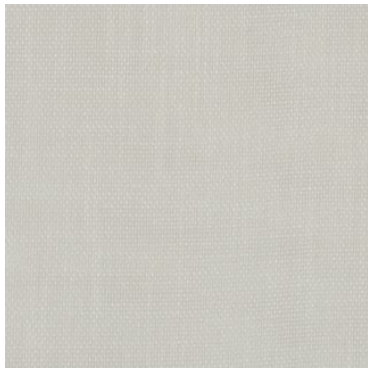


**Willow Pampas**

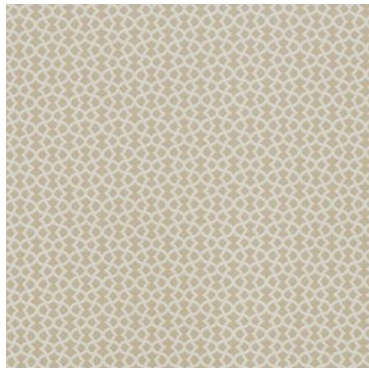


**Reed Pampas**





**Wren Pampas**



**Ivy Pampas**



**Waffle Pampas**



**Callia Almond**



**Rattan Pampas**



**Matelasse Pampas**



**Clove Pampas**



**Fay Pampas**



**Sapling Pampas**



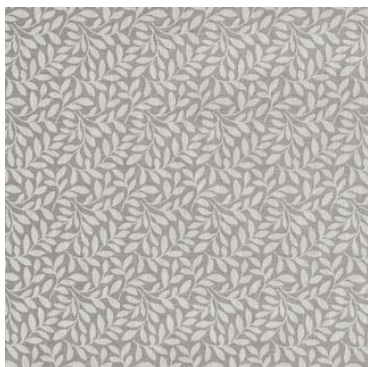
**Talia Pampas**



**Pom Pom Pampas**



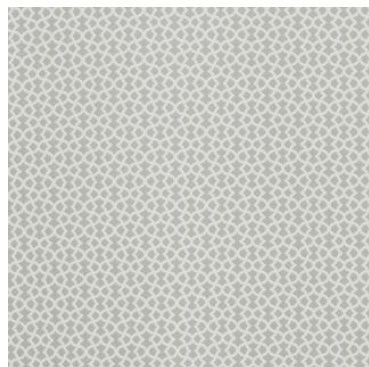
**Willow Pewter**



**Sapling Pewter**



**Waffle Pewter**

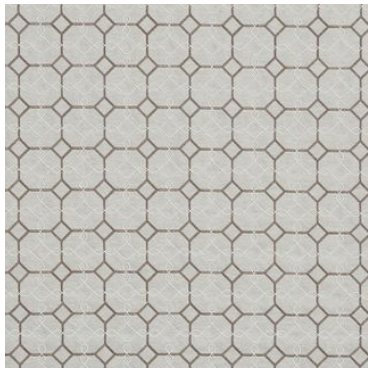


**Ivy Pewter**

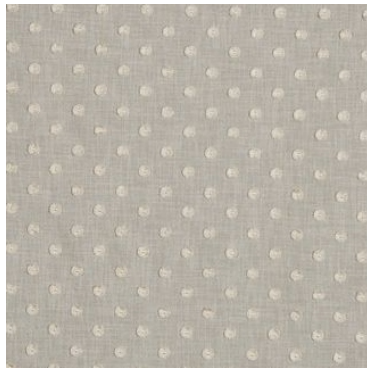


**Wilder Pampas**





**Matelasse Pewter**



**Pom Pom Pebble**



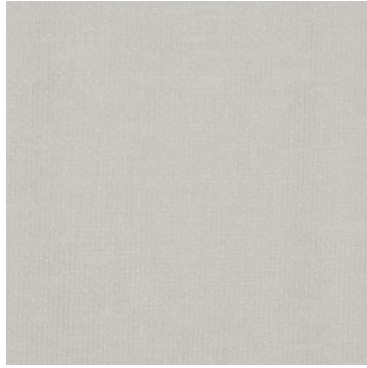
**Pom Pom Pewter**



**Seedling Pewter**



**Fay Pewter**



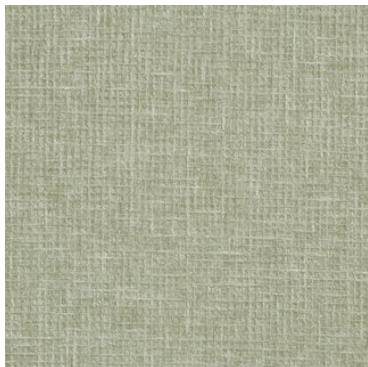
**Reed Pewter**



**Rattan Pewter**



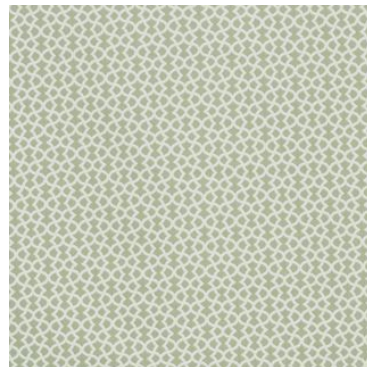
**Willow Basil**



**Waffle Basil**



**Fay Basil**



**Ivy Basil**



**Pom Pom Basil**



**Seedling Basil**



**Rattan Basil**



**Sapling Basil**



**Wildier Basil**



## CRAFT COLLECTION DETAILS

### Callia

49% Cott/38% Poly/13% Lin  
305cm (useable 300cm)  
Plain  
Curtaining

### Clove

100% Polyester  
145cm (useable 142cm)  
Plain  
Multi Purpose 12,000 rubs

### Fay

74% Cotton/26% Polyester  
140cm (useable 137cm)  
Plain  
Multi Purpose 35,000 rubs

### Ivy

86% Cotton/14% Polyester  
146cm (useable 142cm)  
V: 4.7cm | H: 6cm  
Curtaining & Accessories

### Marble

59% Poly/27% Lin/14% Cott  
309cm (useable 305cm)  
Plain  
Curtaining

### Matelasse (Embroidery)

67% Poly/24% Cott/9% Visc  
142cm (useable 130cm)  
V: 8cm | H: 8cm  
Curtaining & Accessories  
Dry Clean Only

### Pom Pom (Embroidery)

78% Polyester/22% Acrylic  
144cm (useable 140cm)  
V: 16cm | H: 27cm  
Curtaining & Accessories  
Dry Clean Only

### Rattan

85% Polyester/15% Cotton  
141cm (useable 138cm)  
V: 3.3cm | H: 11.5cm  
Multi Purpose 25,000 rubs

### Reed

72% Polyester/28% Cotton  
305cm (useable 300cm)  
Plain  
Curtaining

### Sapling

64% Poly/25% Visc/11% Lin  
143cm (useable 140cm)  
V: 13.8cm | H: 17.4cm  
Curtaining & Accessories

### Seedling (Embroidery)

69% Poly/25% Cott/6% Visc  
142cm (useable 130cm)  
V: 31.5cm | H: 43.3cm  
Curtaining & Accessories  
Dry Clean Only

### Talia

71% Poly/15% Lin/14% Cott  
310cm (useable 307cm)  
Plain  
Curtaining

### Waffle

52% Polyester/48% Cotton  
140cm (useable 137cm)  
Plain  
Multi Purpose 70000 rubs

### Wildier (Embroidery)

68% Polyester/32% Cotton  
142cm (useable 130cm)  
V: 47cm | H: 65cm  
Curtaining & Accessories  
Dry Clean Only

### Willow (Embroidery)

61% Cott/21% Poly/18% Visc  
143cm (useable 138cm)  
V: 16cm | H: 17.3cm  
Curtaining & Accessories  
Dry Clean Only

### Wren

47% Poly/27% Visc/15% Cott/11% Lin  
305cm (useable 300cm)  
Plain  
Curtaining  
Dry Clean Only



**OEKO-TEX®**  
CONFIDENCE IN TEXTILES  
**STANDARD 100**