

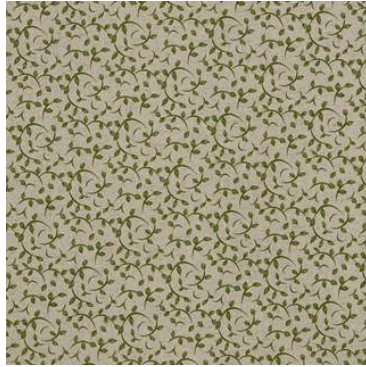


**GREENHOUSE ~ free flowing, whimsical designs**

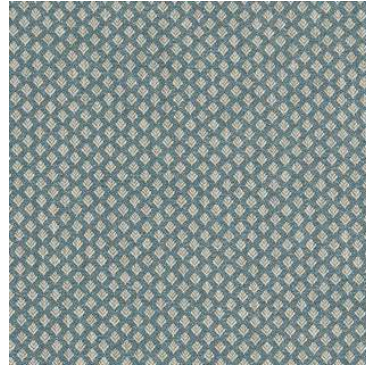
Lose yourself amongst the free-flowing, whimsical designs of Greenhouse. Reminiscent of tranquil landscapes nestled upon the English countryside, on-trend block prints remain the central talking point of Greenhouse, with traditional, woodblock-style designs ensuring a wonderfully textured look throughout. Hand-drawn designs depicting intricate, small-scale scenes of country flora are anchored by a cotton linen-blend base cloth for a quintessentially rustic feel. Complimenting the collection's free-flowing prints are two upholstery-weight woven designs, for wonderfully cohesive schemes.



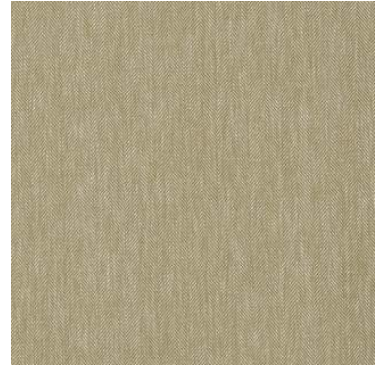
**Chatsworth Cornflower**



**Syon Fennel**



**Hattie Cornflower**



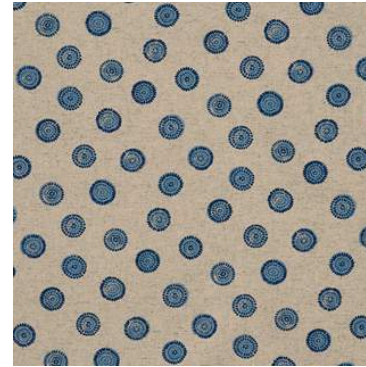
**Martha Fennel**



**Boughton Cornflower**



**Kentwell Cornflower**



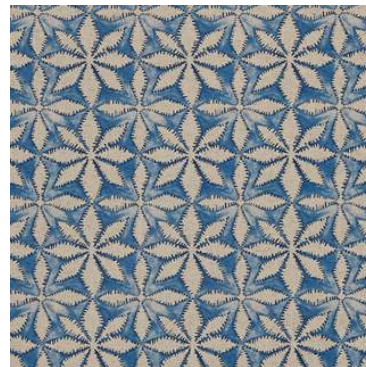
**Daisy Cornflower**



**Ragley Fennel**



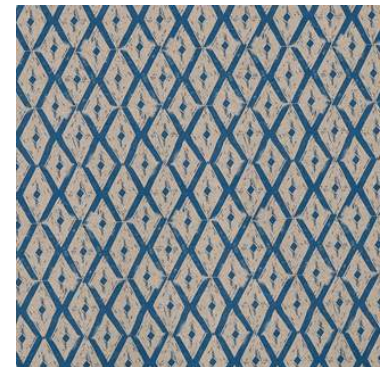
**Wollerton Cornflower**



**Haddon Cornflower**



**Elsham Fennel**



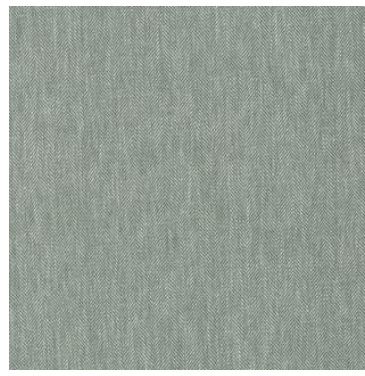
**Stanbury Cornflower**



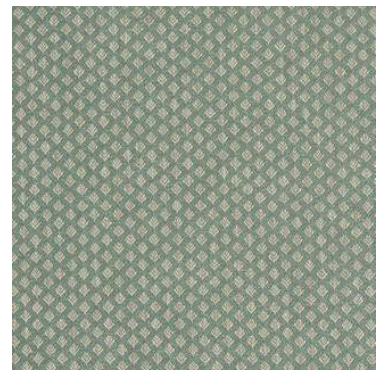
**Chatsworth Poppy**



**Syon Sky**



**Martha Sky**



**Hattie Sky**



**Boughton Poppy**



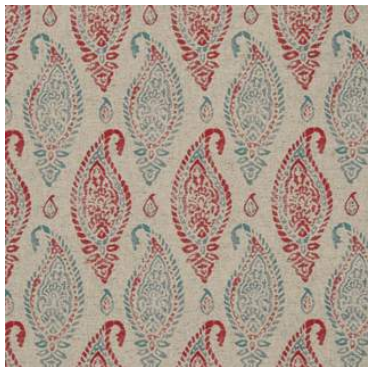
**Haddon Apple**



**Kentwell Poppy**



**Elsham Poppy**



**Wollerton Poppy**



**Ragley Sky**



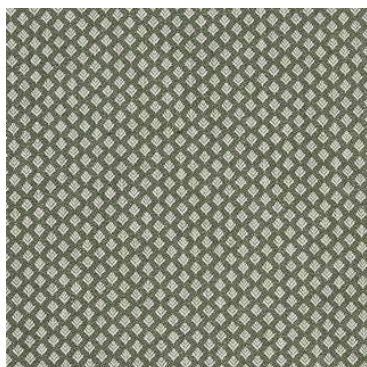
**Stanbury Apple**



**Chatsworth Ginger**



**Haddon Ginger**



**Hattie Olive**



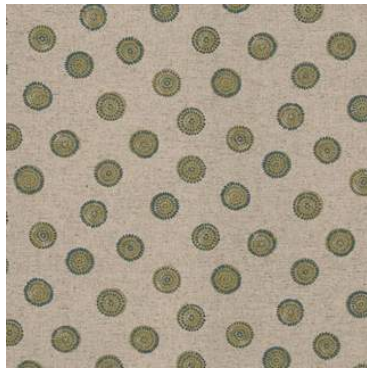
**Martha Ginger**



**Boughton Ginger**



**Kentwell Ginger**



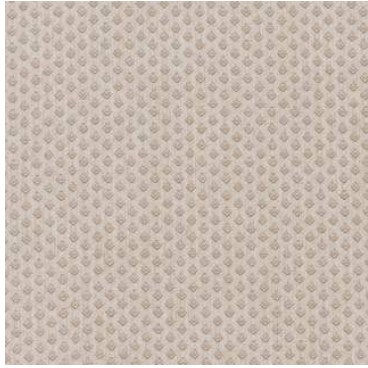
**Daisy Olive**



**Stanbury Ginger**



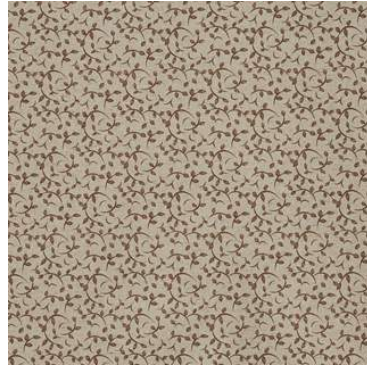
**Wollerton Ginger**



**Hattie Stone**



**Chatsworth Honey**



**Syon Nutmeg**



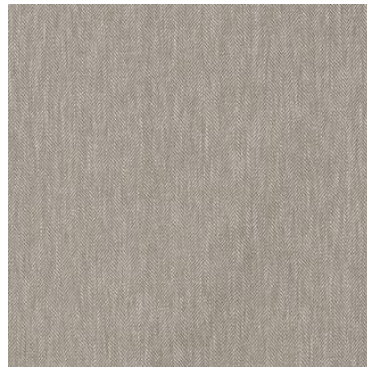
**Kentwell Honey**



**Stanbury Honey**



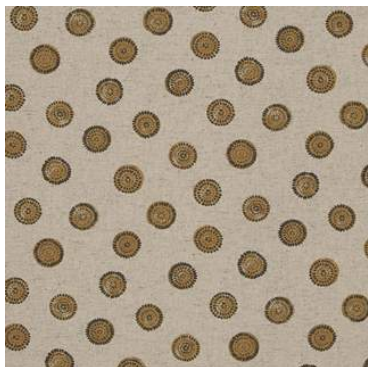
**Wollerton Slate**



**Martha Stone**



**Hattie Slate**



**Daisy Honey**



**Haddon Nutmeg**



**Elsham Slate**



## GREENHOUSE COLLECTION DETAILS

### Boughton (Print)

90% Cotton /10% Linen  
145cm (useable 142cm)  
V: 18cm | H: 19.8cm  
Curtaining & Accessories  
Oeko-Tex



### Chatsworth (Print)

90% Cotton /10% Linen  
145cm (useable 142cm)  
V: 26.3cm | H: 17.5cm  
Curtaining & Accessories  
Oeko-Tex



### Daisy (Print)

90% Cotton /10% Linen  
145cm (useable 142cm)  
V: 19.8 half 9.9cm | H: 40.2cm  
Curtaining & Accessories  
Oeko-Tex



### Elsham (Print)

90% Cotton /10% Linen  
145cm (useable 142cm)  
V: 8cm | H: 4.6cm  
Curtaining & Accessories  
Oeko-Tex



### Haddon (Print)

90% Cotton /10% Linen  
145cm (useable 142cm)  
V: 8.3cm | H: 8.7cm  
Curtaining & Accessories  
Oeko-Tex



### Hattie

50% Cotton /50% Polyester  
142cm (useable 138cm)  
V: 1.8cm | H: 1.8cm  
Multi Purpose 90,000 rubs



### Kentwell (Print)

90% Cotton /10% Linen  
144cm (useable 140cm)  
V: 35.8cm | H: 46.2cm  
Curtaining & Accessories  
Oeko-Tex



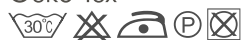
### Martha

50% Cotton /50% Polyester  
142cm (useable 138cm)  
Plain  
Multi Purpose 90,000 rubs



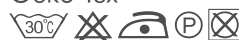
### Ragly (Print)

90% Cotton /10% Linen  
145cm (useable 142cm)  
V: 6.7cm | H: 7cm  
Curtaining & Accessories  
Oeko-Tex



### Stanbury (Print)

90% Cotton /10% Linen  
145cm (useable 142cm)  
V: 20.3cm | H: 10cm  
Curtaining & Accessories  
Oeko-Tex



### Syon (Print)

90% Cotton /10% Linen  
145cm (useable 142cm)  
V: 9.8cm | H: 9.8cm  
Curtaining & Accessories  
Oeko-Tex



### Wollerton (Print)

90% Cotton /10% Linen  
145cm (useable 142cm)  
V: 16.7cm | H: 8.7cm  
Curtaining & Accessories  
Oeko-Tex



#### NOTE:

This is a Prestigious Textiles imported collection. Orders are consolidated and airfreighted from the UK.