



KYOTO ~ Japandi inspired minimalism.

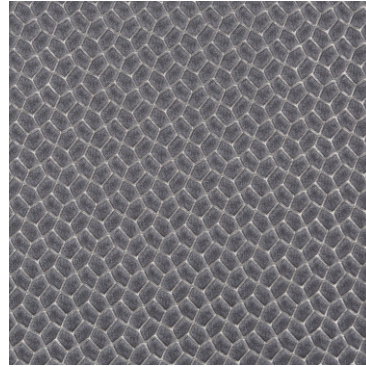
Designed with Oriental influences, Kyoto celebrates the wonders of Japan. The collection's six designs take inspiration from Japanese gardens, offering a range of prints and opulent jacquards embracing lotus flowers, watercolour foliage and an origami-inspired geometric. Presented in a palette taken from East Asian landscapes, Kyoto has the perfect blend of calming neutrals and warm, spiced shades.



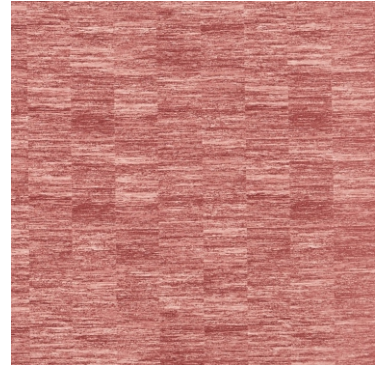
Osaka Spice



Bonsai Maple



Origami Midnite



Honshu Spice



Acer Midnite



Lotus Midnite



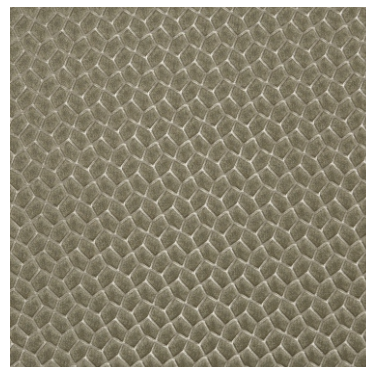
Osaka Green Tea



Bonsai Green Tea



Honshu Wasabi



Origami Green Tea



Acer Bamboo



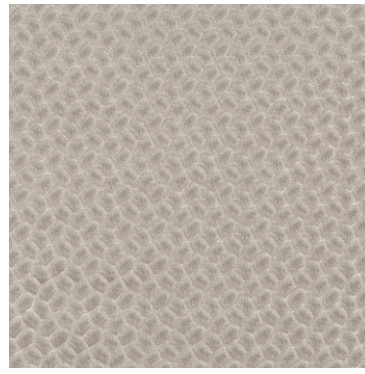
Lotus Green Tea



Osaka Pampas



Bonsai Pampas



Origami Pampas



Honshu Pampas



Acer Pampas



Lotus Pampas



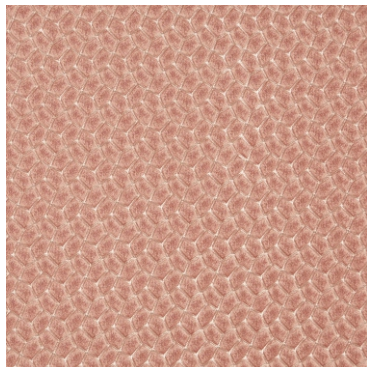
Osaka Papaya



Bonsai Lake



Honshu Lake



Origami Blossom



Acer Papaya



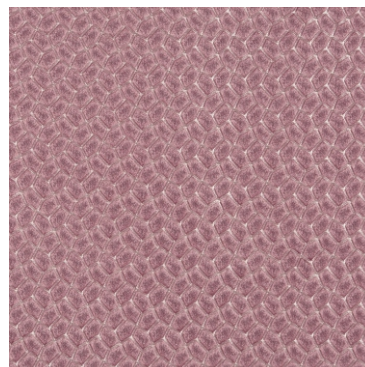
Lotus Blossom



Osaka Plum



Bonsai Plum



Origami Plum



Honshu Plum



Acer Plum

Lotus Plum

WHAT IS THE JAPANI INTERIOR TREND?

Japani - the newest word in the trend dictionary - is a blend of both Japanese and Scandinavian interiors. The two design styles compliment each other perfectly and have been combined to create one harmonious trend, taking the most-loved elements from each.



KYOTO COLLECTION DETAILS

Acer

100% Cotton
 148cm (useable 140cm)
 V: 68cm | H: 140cm
 Dual Purpose 80,000 rubs
 ☹️ ❌ 👁️ Ⓟ ❌

Bonsai

100% Polyester
 148cm (useable 144cm)
 V: 68.2cm | H: 24cm
 Dual Purpose 25,000 rubs
 ☹️ ❌ 👁️ Ⓟ ❌

Honshu

79% Polyester /21% Cotton
 145cm (useable 141cm)
 V: 34.6cm | H: 35.5cm
 Dual Purpose 35,000 rubs
 ☹️ ❌ 👁️ Ⓟ ❌

Lotus

100% Polyester
 143cm (useable 140cm)
 V: 45.3cm | H: 46.7cm
 Curtaining & Cushions
 ☹️ ❌ 👁️ Ⓟ ❌

Origami

100% Polyester
 143cm (useable 140cm)
 V: 3.3cm | H: 3cm
 Curtaining & Cushions
 ☹️ ❌ 👁️ Ⓟ ❌

Osaka

100% Cotton
 148cm (useable 140cm)
 V: 69.7cm | H: 69cm
 Dual Purpose 80,000 rubs
 ☹️ ❌ 👁️ Ⓟ ❌



OEKO-TEX®
 CONFIDENCE IN TEXTILES
STANDARD 100 